



BOISE BIBLE COLLEGE

Boise Bible College's 16-acre campus lies in a suburban neighborhood with easy access to shopping centers, parks, employment, and the Greenbelt along the Boise River. Most students live in a new dormitory, which carefully balances community life and private space. Instructional space is designed for plentiful interaction between students and instructors and the integration of new technology in mind. A new student center opened in 2014, facilitating the community life and spiritual development of the BBC student body.

TAKING A TOUR:

Visit: boisebible.edu
or call: 208-376-7731

Minister avg = \$58k-\$158k

HOW TO APPLY:

Visit: boisebible.edu
Apply now
Deadline: July 15

TUITION: (per year)

Resident: \$12,080

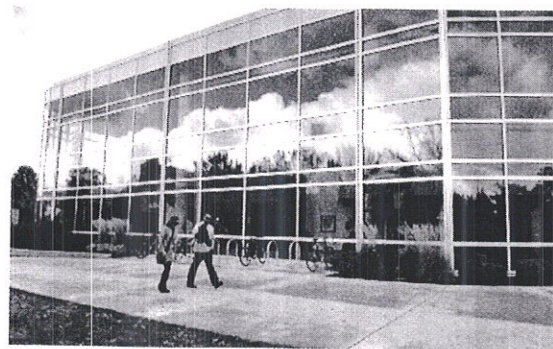
FINANCIAL AID:

Visit: boisebible.edu for information.
Deadline: July 15

GET IN TOUCH:

boisebible.edu
208-376-7731
admissions@boisebible.com

*April 11-13, 2019 (2 days on-campus)
most degrees towards Christian church
→ Teaching (K-12), Leadership, Undergrad
on-religious programs Counseling
all programs include Leadership



BOISE STATE UNIVERSITY

Maybe it's our central location at the heart of the capital-the hub of government, business, health-care, innovation, or our strong connections with hundreds of companies and organizations in the region. Maybe it's because we're Idaho's metropolitan research university, or perhaps it's our close proximity to the adventures that lie in the foothills along the Greenbelt or down the river. Maybe it's the cutting edge technology and academic success which fuels the University and surrounding community. No matter the reason, coming to Boise State will put you in a culture of innovation with opportunities in all the right places.

TAKING A TOUR:

Visit: admissions.boisestate.edu/visitus
Call: 208-426-1156

HOW TO APPLY:

Visit: admissions.boisestate.edu/apply
Deadline: May 1st

TUITION: (per year)

Resident: \$8,118

FINANCIAL AID:

Visit: financialaid.boisestate.edu
Call: 208-426-1664
Deadline: Feb. 15th

GET IN TOUCH:

boisestate.edu
208-426-1000
admissions@boisestate.edu

*Honors College
Financial Aid (Schol)
Deadline = 2/15/19*

** Use Apply Idaho
+ no need to send
transcripts/test scores*

*Only final
transcript if
enrolling*

*80% Retention Rate (Fresh → Soph)
#43 in Nation (#3 in Northwest)
Hands-on workforce development focus
(internships, "Work U" (mentoring, class))
Service Learning*



BRIGHAM YOUNG UNIVERSITY-IDAHO

Founded in 1888, BYU-Idaho cultivates a distinctive environment in accordance with the standards of its sponsor, The Church of Jesus Christ of Latter-day Saints. While most universities are research-focused and faculty-centered, BYU-Idaho is teaching focused and student-centered. Through hands-on student instruction and leadership opportunities, students are given practical opportunities to build skills that will help them become Disciples of Christ and leaders in the workforce. As students engage in active teaching and learning, they will become a qualified leader in their families, the Church, the workplace, and the community.

TAKING A TOUR:

Visit: byui.edu/admissions
Call: 208-496-1300

HOW TO APPLY:

Visit: education.lds.org
Call: 208-496-1300
Deadline: Feb. 1st

TUITION: (per year)

LDS = \$4,018
Non LDS = \$8,036

FINANCIAL AID:

Visit: byui.edu/financial-aid
Deadline: April 15
(also based on FAFSA)

GET IN TOUCH:

byui.edu/admissions
208-496-1300
admissions@byui.edu

*Online Concurrent (Online)
* Any ONLINE (of major, pre-ref)
16th years, junior
\$30 credit / \$60 credit
on campus*

*Campus Day
Oct. 19th
9:30-3:00pm
(Free)*

*Avg GPA 3.5
Avg SAT 1160
Avg ACT 24
96% Accept. Rate
Avg Class size = 31*

*byui.edu/scholarships
Due March 15, 2019*



COLLEGE OF SOUTHERN IDAHO

Nestled in the heart of Southern Idaho, CSI's main campus is located in beautiful Twin Falls. Skiing, rock climbing, geothermal hot springs, white water rafting, fishing, and more are all less than an hour away. With off-campus locations in Gooding, Jerome, Hailey, and Burley, CSI offers over 130 degree programs, including a myriad of online classes. The 315-acre campus houses a state-of-the-art Fine Arts Center, traditional dorm-style living, the largest ropes course west of the Mississippi, over 50 student clubs, and 9 NJCAA athletic teams who have brought home 20 championships. Amid rising costs for college, The College of Southern Idaho remains one of the most affordable higher education options offering Associate degrees and technical certificates.

TAKING A TOUR:

Visit: whycsi.com
Call: 208-732-6221

HOW TO APPLY:

Visit: whycsi.com
Call: 208-732-6221
Deadline: Aug. 10th

TUITION: (per year)

In District: \$3,360
Out of District: \$4,560

FINANCIAL AID:

Call: 208-732-6221
Visit: csi.edu/financialaid
Deadline: July 16th
(applications and documents turned in)

GET IN TOUCH:

csi.edu
208-732-6221
admissions@csi.edu
Dan Guthrie

*Eagle
Exploration Day
Oct. 18th
Nov. 15th
Feb. 7th
(maybe a bus for
transportation)*

*1. ~~and~~
(~~first~~ ~~last~~)
2. ~~Check enrollment with~~
~~CSI~~
3. ~~Planning for~~
~~Missing program~~
4. ~~Final Form Rep on~~
~~CSIPAS~~*

*• 96% Job placement for
CTE programs
• Bachelor's Degree
in Food Technology
• Scholarship Application
will be open for College App
Week*

**unweighted GPA (no more entering classes!)*



COLLEGE OF WESTERN IDAHO

College of Western Idaho (CWI) is located in the Treasure Valley—the state's cultural and economic hub. The Treasure Valley is recognized nationally as a great place to live, work, and get an education. CWI is the largest community college in Idaho and provides students an abundance of opportunities for learning. Locations include Boise, Nampa, and Online. Numerous degrees are offered fully online as well as hundreds of hybrid and online courses. CWI offers affordable education with low cost per credit and access to scholarships and financial aid. With a full range of certificates and two-year degrees, transferring to a university or directly into the workforce are both great options. The quality of education at CWI competes with any college or university.

TAKING A TOUR:

Visit: cwidaho.cc/visit
Call: 208-562-3000

HOW TO APPLY:

Visit: cwidaho.cc/apply
Call: 208-562-3000
onestop@cwidaho.cc
Deadline: August 11th

TUITION: (per year)

In-District: \$3,336
Out-of-District: \$4,336

FINANCIAL AID:

(based on FAFSA)
Call: 208-562-3000
Deadline: July 10th

GET IN TOUCH:

cwidaho.cc/contact
208-562-3000
onestop@cwidaho.cc

*New - on-campus
Orientation for
new students

(Dual credit AA
students do not need
to attend in person)

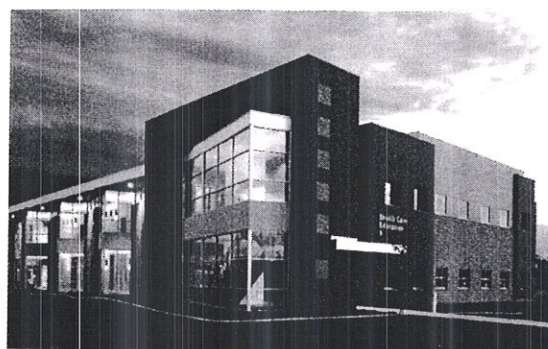
FAFSA night for
Spanish speakers

New Programs:
Engineering
STEM

Computer Science

New Certificates:
Robotics

• LPN program
Coming back



COLLEGE OF EASTERN IDAHO

College of Eastern Idaho, located in Idaho Falls, is Idaho's newest community college offering students both AA and AS degrees (starting Spring 2018) as well as Career Technical Education. Our technical programs provide hands-on-training to give our students real world experience to prepare them to enter their chosen career. Our academic degrees provide pathways to help students get their 2 years of general education completed before transferring to a university. We pride ourselves in our small class sizes with a student to teacher ratio of 9 to 1 in 2016 and our high graduate positive placement of 92%. We believe in Real Education, Real Jobs for Real Life.

TAKING A TOUR:

Call: 208-524-3000
or 208-535-5337

HOW TO APPLY:

Visit: eitc.edu/admissions.cfm
Call: 208-524-3000
Deadline: none

TUITION: (per year)

Resident: \$3,096

FINANCIAL AID:

Visit: eitc.edu/financial-aid
Call: 208-535-5374
Deadline: June 1st

GET IN TOUCH:

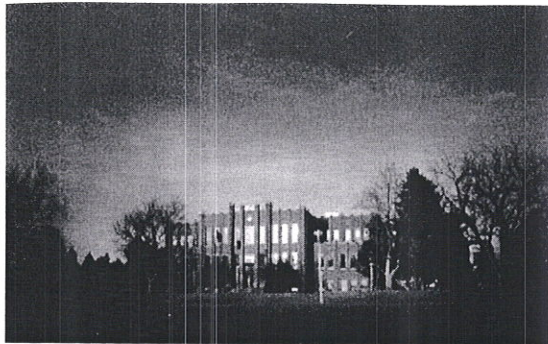
www.eitc.edu
208-524-3000
info@my.eitc.edu

"2+2"
(CEI → ISU)

• Co-enrollment
with U of I

• \$1.7M grant for
Nursing Program

• Armed Forces
Rep. on campus



IDAHO STATE UNIVERSITY

Idaho State University is a research university located in Pocatello, with additional locations in Idaho Falls, Meridian and Twin Falls. ISU is the state's designated leader in the health professions, but with more than 250 academic programs and 150 student clubs and organizations, there are plenty of opportunities to become a part of the Bengal community. Opportunities for undergraduate research, performing in a nationally acclaimed performing arts center, and personal interaction with faculty members are some of the reasons our students choose ISU. ISU is at the heart of an outdoor-lover's paradise and a short drive to some of America's greatest natural wonders and exciting outdoor recreation opportunities.

TAKING A TOUR:

Visit: isu.edu/visit
Call: 208-282-2123

HOW TO APPLY:

Visit: isu.edu/apply/
Call: 208-282-2123

Deadline: (Fall) August 1
(Spring) December 1

TUITION: (per year)

Resident \$7,420

FINANCIAL AID:

Visit: isu.edu/finaid
Call: 208-282-2756

GET IN TOUCH:

isu.edu/visit
208-282-2123
info@isu.edu
Pocatello: isu.edu
Idaho Falls: isu.edu/ifche
Meridian: isu.edu/meridian
Twin Falls: isu.edu/tfctr

icom (Orth. Med) opening
in Meridian

New Healthcare Mgt. major
New Colleges - Nursing,
Rehab, Health Professions

College of Technology
- 96% Job placement
- new complex
- 35 programs

Step Ahead Scholarship
\$1,000 for first semester
for dual credit students

Scholarship deadline 2/15

9/29/18 - Spirit Saturday

10/26/18 - Experience ISU (Seniors) *Bus from Meridian campus

12/4/18 - Idaho Scholars

10/23/18 - Health Exp. Night in Meridian



LEWIS-CLARK STATE COLLEGE

3,700 Students 76% 1st Generation

Lewis-Clark State College is a school dedicated to your needs. "The Warrior Way" at LCSC is about quality education and a warm campus culture at a price that you can afford. LCSC features a personalized classroom experience in a small college environment, where faculty and staff will go the extra mile for you. Located in Lewiston, the tree-lined campus blends traditional and modern structures, while wilderness and recreation areas are only minutes away. At LCSC, The Warrior Way is more than an education: it's a lifestyle.

TAKING A TOUR:

Visit: lcsc.edu/visit-campus
Call: 208.792.2378

HOW TO APPLY:

Visit: lcsc.edu/admissions
Deadline: March 1st.

TUITION: (per year)

Resident: \$6,334

FINANCIAL AID:

Visit: lcsc.edu/financialaid or
Call: 208.792.2224
Deadline: March 1st.

GET IN TOUCH:

lcsc.edu
208-792-2210
208-792-2378
admissions@lcsc.edu

New Programs:

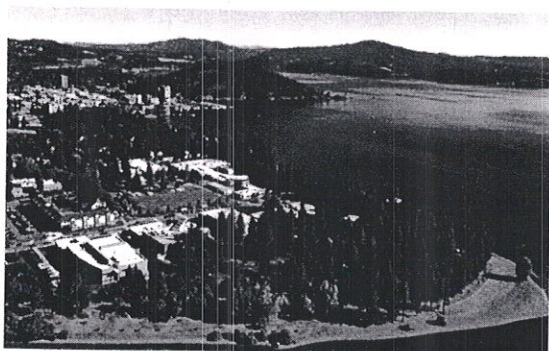
Creative Writing
Psychology
Communications
Interdisciplinary (AAS)
(create own degree)

* Work Scholars program
• 10 hrs/week in job
related to career

• \$1500 stipend
• tuition paid for
• competitive

Developing Partnerships
3+3 (3 yrs @ LCSC
3 yr @ Law School)
3+2 Athletic Training
(U of I)
Master's in Social
Work
(www)

Counselor
recommended
Scholarship
11/1/18 - Bus to LCSC



NORTH IDAHO COLLEGE

Founded in 1933, North Idaho College is a comprehensive community college located on the shores of Lake Coeur d'Alene. NIC offers degrees and certificates in more than 80 college transfer and career and technical programs. NIC operates with an open-door admissions policy and as one of three community colleges in Idaho, NIC works closely with the University of Idaho, Lewis-Clark State College, Idaho State University, and Boise State University. With outdoor recreation opportunities abound in the Northwest, North Idaho College offers a wide variety of student engagement opportunities and is also known for its competitive athletics programs.

TAKING A TOUR:

Visit: nic.edu/visit
Call: 208-769-7733

12/2/18 > Discover Days
3/19/19

HOW TO APPLY:

Visit: www.nic.edu/apply
Call: 208-769-3311

Deadline: August 9th

Suggested 3/15/19

TUITION: (per year)

Resident: \$3,360

FINANCIAL AID:

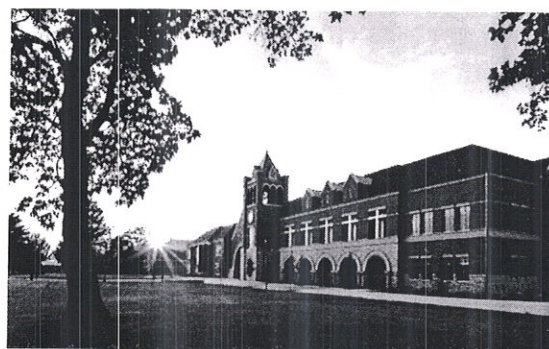
Visit: nic.edu/financialaid
Call: 208-769-3368
Deadline: March 15th

GET IN TOUCH:

nic.edu
877-404-4536
admit@nic.edu

4/12/19 - Hammers, ~~Headbands~~
Hardhats, and
Hotdogs event

North Idaho Higher Ed.
Coalition (Can stay
in CDA + get Bachelor's
thru PhD thru collaboration
with other colleges)



NORTHWEST NAZARENE UNIVERSITY

Northwest Nazarene University is a comprehensive Christian university committed to the transformation of the whole person. With more than 60 areas of undergraduate study, graduate and doctoral programs to choose from, you'll never have to settle for less than your true passion. Our grads leave NNU prepared to embark on a career path and to pursue advanced degrees. NNU also places a high value on relationships with our 40 clubs and organizations, international missions, study abroad opportunities and campus events. Opportunities for growth and involvement abound at NNU.

TAKING A TOUR:

Visit: love.nnu.edu/visit
Call: 208-467-8640 or
Email: visit@nnu.edu

HOW TO APPLY:

Visit: love.nnu.edu
Call: 1-877-NNU-4-YOU
Email: admissions@nnu.edu
Deadline: February 1st

TUITION: (per year)

Resident: \$29,300

FINANCIAL AID:

(based on admission application & FAFSA)
Call: 208-467-8638
Deadline: January 15th

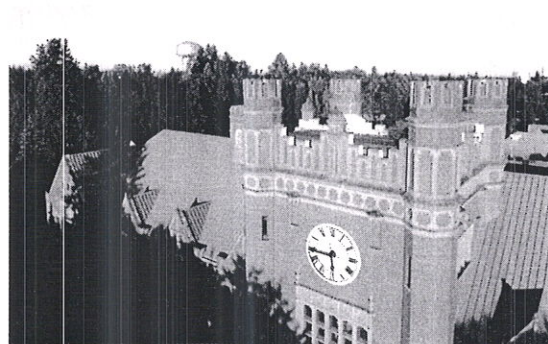
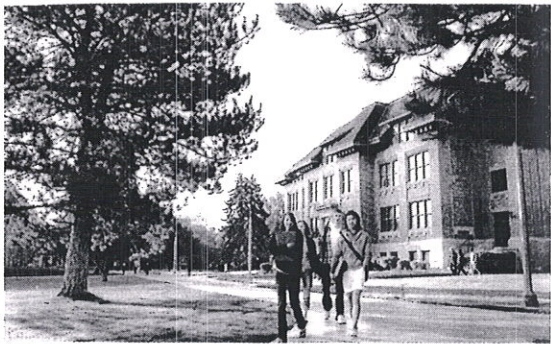
GET IN TOUCH:

love.nnu.edu
208-467-8000
admissions@nnu.edu

Soccer Lacrosse
Club sports beginning
next year

Co-majors (2 diff. areas
into one area)

New Majors:
Agricultural Engineering
Worship Arts
Music Industry



THE COLLEGE OF IDAHO

The College of Idaho has a 127-year-old legacy of excellence. The C of I is known for its outstanding academic programs, winning athletics tradition and history of producing successful graduates, including seven Rhodes Scholars, three governors, and countless business leaders and innovators. Its distinctive PEAK Curriculum challenges students to attain competency in the four knowledge peaks of humanities, natural sciences, social sciences and a professional field—empowering them to earn a major and three minors in four years. The College's close-knit, residential campus is located in Caldwell, where its proximity both to Boise and to the world-class outdoor activities of southwest Idaho's mountains and rivers offers unique opportunities for learning beyond the classroom.

TAKING A TOUR:

Visit: collegeofidaho.edu/visit
Call: 208-459-5020 or
Email: visitcenter@collegeofidaho.edu

HOW TO APPLY:

Visit: collegeofidaho.edu/apply
Deadline: May 1st
Regular Decision Feb 15th

TUITION: (per year)

Resident: \$29,400

FINANCIAL AID:

Visit: collegeofidaho.edu/financialaid
Call: 208-459-5307
Deadline: Feb 15th

GET IN TOUCH:

collegeofidaho.edu/admission
208-459-5011
admission@collegeofidaho.edu

Fall Discovery Day

SAT. Oct. 27th

Free Adm. to Football game (1pm)
also 12th (for sale - 1AC)

New → Marketing + Digital Media
Bio-Medical

Can apply using
Common App or their
own application

- Essay
- ACT/SAT Scores
(Test optional)
- Transcript

- One letter of Recommendation

Feb. 4th-15th

K. Albertson's Scholarship
Competition

\$500/yr for attending

\$1,000/yr

\$2,500/yr top

3.0 GPA or ↑ (can be weighted)

UNIVERSITY OF IDAHO

Since 1889, the University of Idaho has provided motivated students with a transformative higher education experience that prepares them to solve real-world problems and achieve success in their lives and careers. Beginning with our beautiful residential campus in Moscow, the university's reach extends throughout Idaho, serving over 12,000 students with educational centers in Coeur d'Alene, Boise and Idaho Falls, a research and extension center in Twin Falls, plus Extension offices in 42 counties. One of the nation's land-grant research universities, U of I is a noted national leader in student-centered learning and interdisciplinary research that promotes public service. Our work serves businesses and communities, advancing the pursuit of diversity, citizenship and global outreach.

TAKING A TOUR:

Visit: uidaho.edu/visit
Call: 208-885-6163

HOW TO APPLY:

Visit: uidaho.edu/application
Call: 208-885-6326
Email: admissions@uidaho.edu
Deadline: No Deadline

TUITION: (per year)

Resident: \$7,863

FINANCIAL AID:

Visit: uidaho.edu/financial-aid
Call: 208-885-6312
Deadline: varies

GET IN TOUCH:

uidaho.edu/my-uidaho
208-885-6163
futurestudents@uidaho.edu

New Art Medical Building

Anatomy + Physiology

- 40 spots for ID residents

- All 4 years in Idaho

Dec. 1st - Priority
Date

After 12/1/18 - awarded
as available

10/26/18 - Envision Day

11/8/18 - Meet Vandals
in Boise

AVANZA (for Latino students)